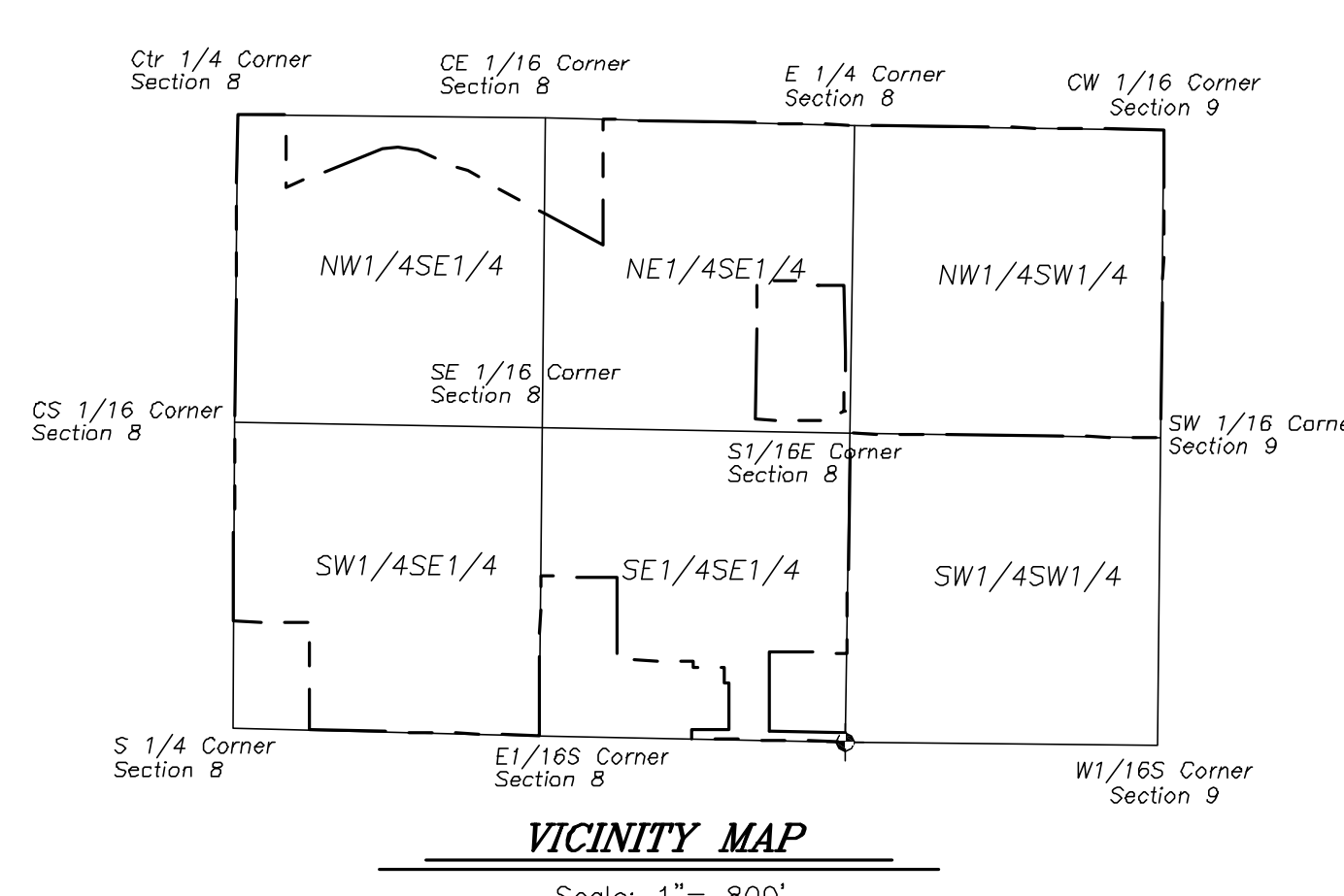
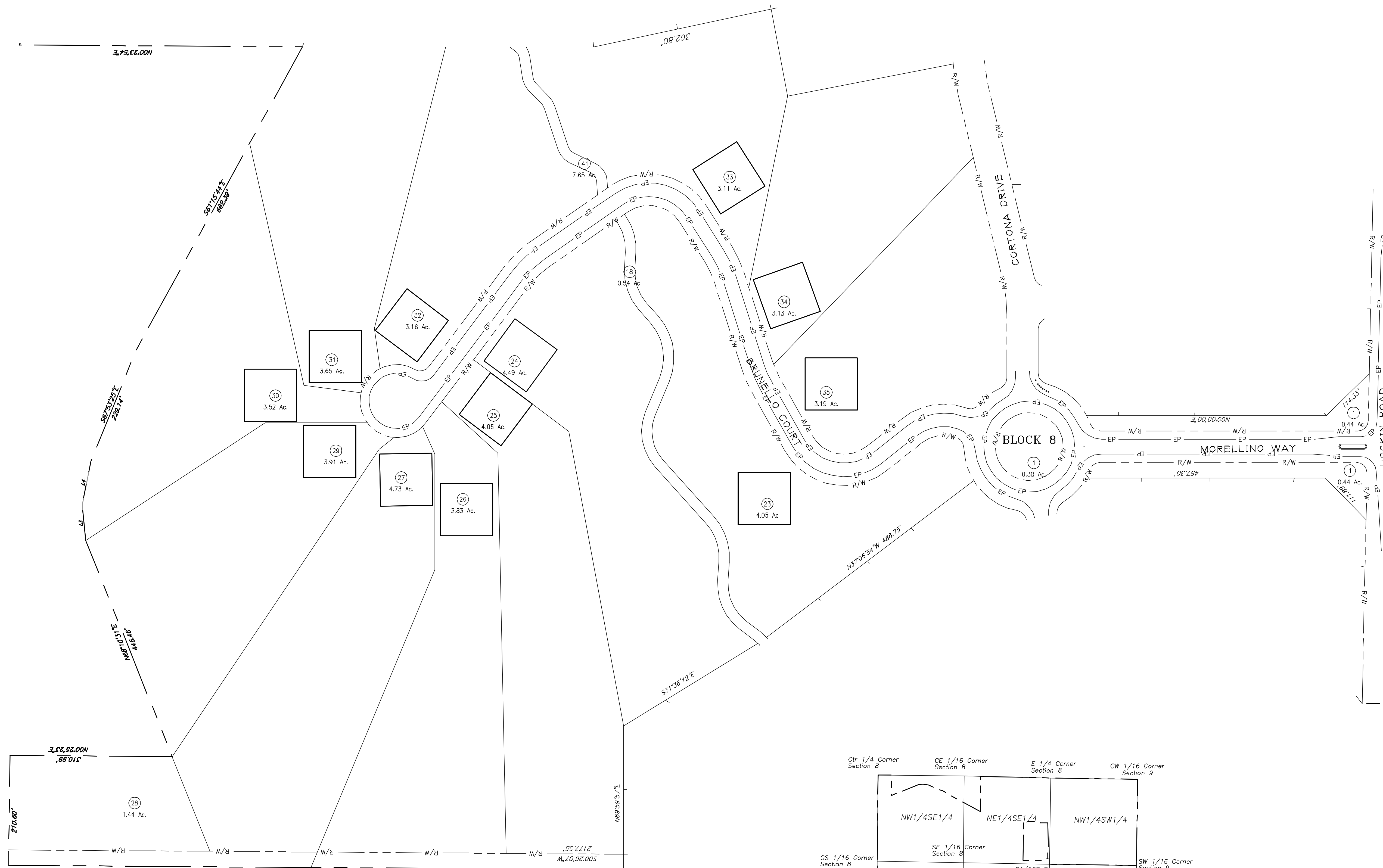
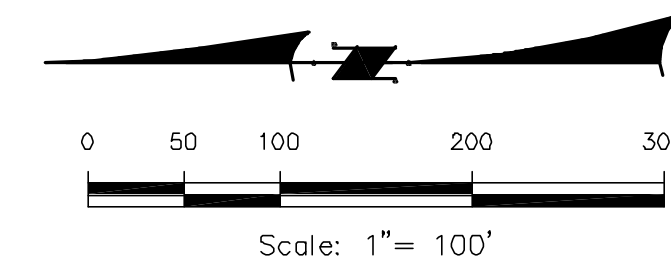


BELLA TOSCANA SUBDIVISION – PRELIMINARY PLAT

A PORTION OF THE SE1/4 OF SECTION 8 AND THE NW1/4 OF THE SW1/4 OF SECTION 9, TOWNSHIP 3 NORTH, RANGE 4 WEST, BOISE MERIDIAN, CANYON COUNTY, IDAHO



REVISIONS				E-FILE NAME
NO.	ITEM	DATE		05094-Preplat.dwg
				DESIGNED
				PC
				DRAWN
				HF
				CHECKED
				PC
				APPROVED

DATE: 5-10-07
 PROJECT: 05094
SHEET 1 OF 1

© 2006 TOOTHMAN-ORTON ENGINEERING CO. THIS INSTRUMENT IS THE PROPERTY OF TOOTHMAN ORTON ENGINEERING CO. ANY REPRODUCTION, REUSE OR MODIFICATION OF THIS INSTRUMENT WITHOUT SPECIFIC WRITTEN PERMISSION OF TOOTHMAN ORTON ENGINEERING CO. IS STRICTLY PROHIBITED.